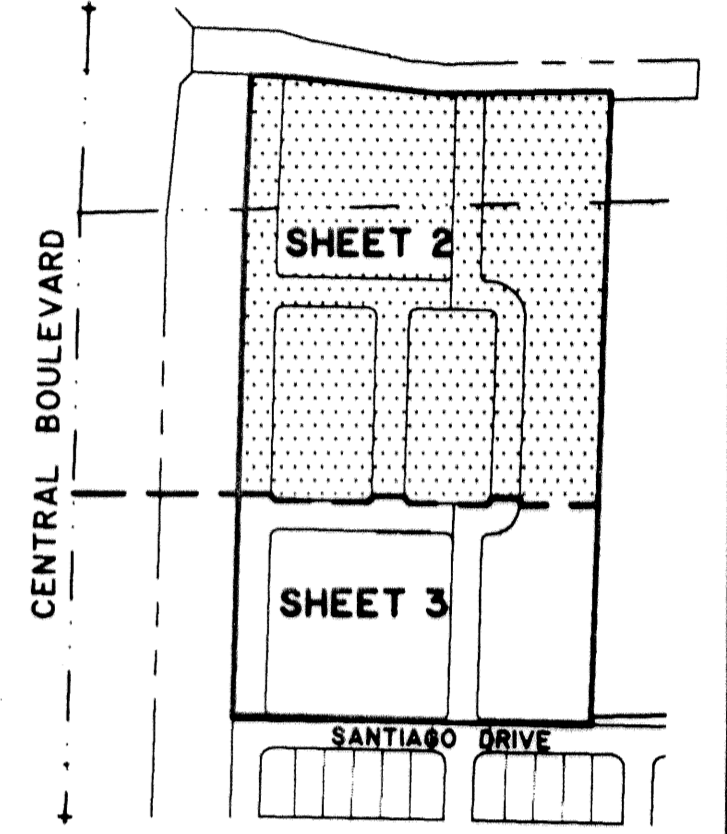


VALENCIA AT ABACOA - PHASE III

BEING A REPLAT OF A PORTION OF TRACT RN6A2, ABACOA PLAT NO. 2 AS RECORDED IN PLAT BOOK 86, PAGES 16 THROUGH 28, PUBLIC RECORDS OF PALM BEACH COUNTY, FLORIDA.
LYING IN SECTION 13, TOWNSHIP 41 SOUTH, RANGE 42 EAST,
TOWN OF JUPITER, PALM BEACH COUNTY, FLORIDA
SHEET 2 OF 3
JANUARY, 2002

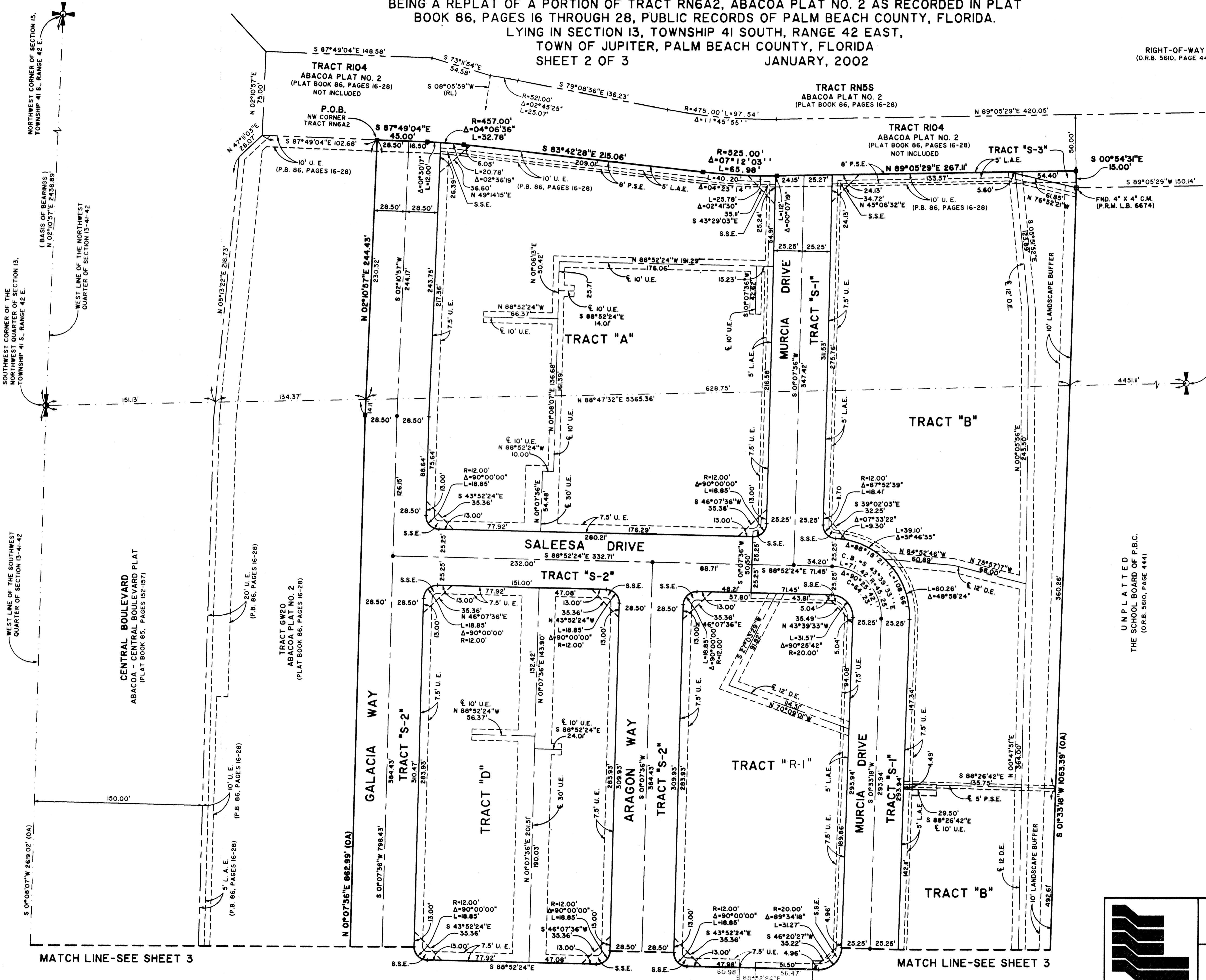
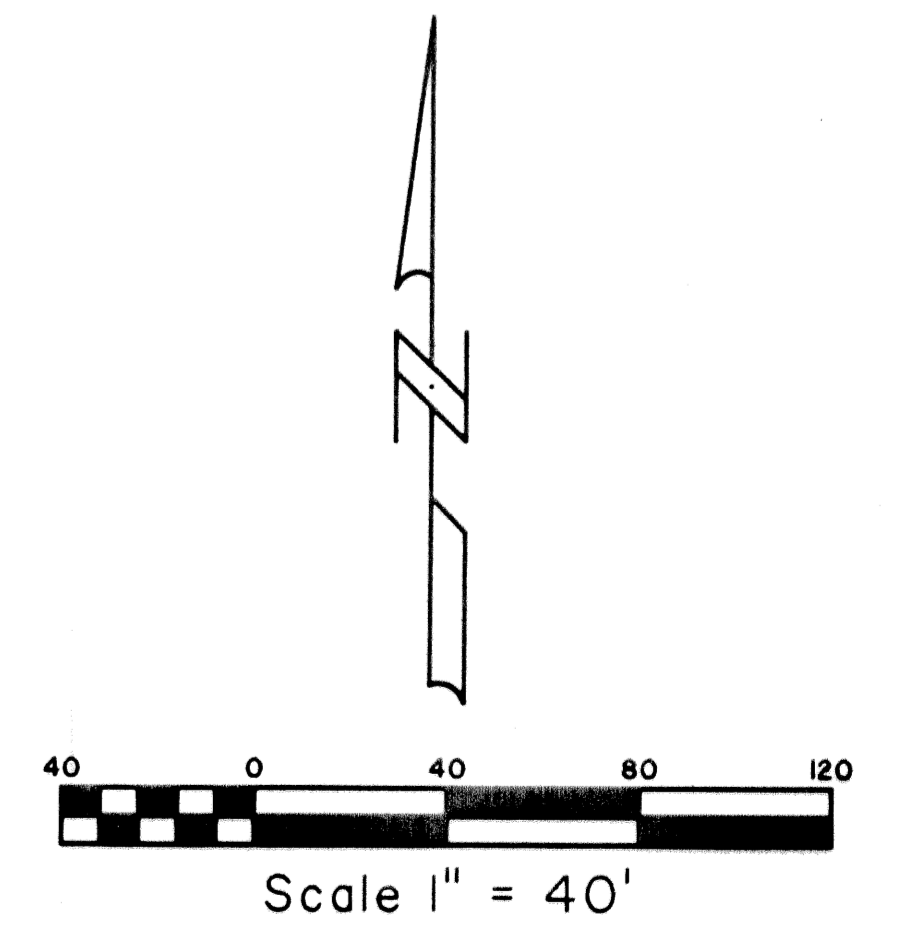
RIGHT-OF-WAY
(O.R.B. 5610, PAGE 446)

STATE OF FLORIDA SS
COUNTY OF PALM BEACH
THIS PLAT WAS FILED FOR RECORD AT
M. THIS DAY OF 2002
AND DULY RECORDED IN PLAT BOOK NO. _____
ON PAGE _____
DOROTHY H. WILKEN,
CLERK OF THE CIRCUIT COURT
BY _____ D.C.



LEGEND

- P.C.P. PERMANENT CONTROL POINT
- P.R.M. PERMANENT REFERENCE MONUMENT
- C.M. CONCRETE MONUMENT
- O.R.B. OFFICIAL RECORD BOOK
- OA OVERALL
- P.B. PLAT BOOK
- P.S.M. PROFESSIONAL SURVEYOR AND MAPPER
- S.S.E. SAFE SIGHT EASEMENT
- P.B.C. PALM BEACH COUNTY
- FND. FOUND
- RL. RADIAL LINE
- C. CENTERLINE
- U.E. UTILITY EASEMENT
- D.E. DRAINAGE EASEMENT
- R. RADIUS
- L. ARC LENGTH
- Δ. CURVE CENTRAL ANGLE
- P.O.B. POINT OF BEGINNING
- P.O.C. POINT OF COMMENCEMENT
- SET P.C.P. LB 4396
- SET P.R.M. LB 4396
- FOUND P.R.M. (AS NOTED)
- C.B. CHORD BEARING
- C. CHORD LENGTH
- L.A.E. LIMITED ACCESS EASEMENT
- L.B. LANDSCAPE BUFFER
- P.S.E. PUBLIC SIDEWALK EASEMENT



WEST LINE OF THE SW QUARTER OF SECTION 13-41-42

WEST LINE OF THE NW QUARTER OF SECTION 13-41-42

NORTHWEST CORNER OF SECTION 13, TOWNSHIP 41 S., RANGE 42 E.

SOUTHEAST CORNER OF THE NORTHWEST QUARTER OF SECTION 13, TOWNSHIP 41 S., RANGE 42 E.

CENTRAL BOULEVARD
ABACOA - CENTRAL BOULEVARD PLAT
(PLAT BOOK 85, PAGES 152-157)

TRACT GW20
ABACOA PLAT NO. 2
(PLAT BOOK 86, PAGES 16-28)

TRACT RI04
ABACOA PLAT NO. 2
(PLAT BOOK 86, PAGES 16-28)
NOT INCLUDED

TRACT RN55
ABACOA PLAT NO. 2
(PLAT BOOK 86, PAGES 16-28)
NOT INCLUDED

TRACT RI04
ABACOA PLAT NO. 2
(PLAT BOOK 86, PAGES 16-28)
NOT INCLUDED

TRACT "S-3"

TRACT "A"

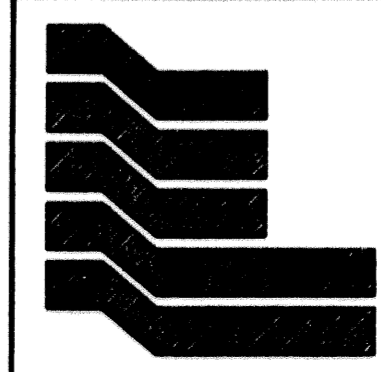
TRACT "B"

TRACT "R-1"

TRACT "B"

MATCH LINE-SEE SHEET 3

MATCH LINE-SEE SHEET 3



Landmark Surveying & Mapping Inc.
1850 Forest Hill Boulevard
Ph. (561) 433-5405 Suite 100 W.P.B. Florida
LB # 4396

VALENCIA AT ABACOA-PHASE III